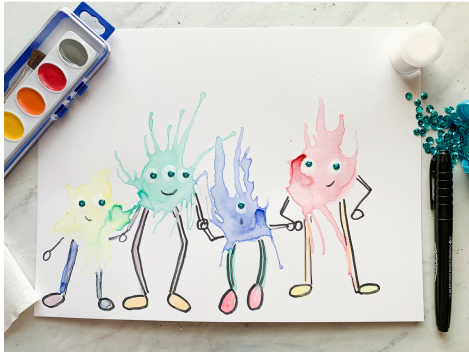




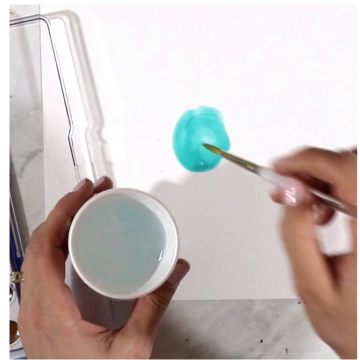
# GERM PAINTING

## PRESCHOOL ARTIST BOX



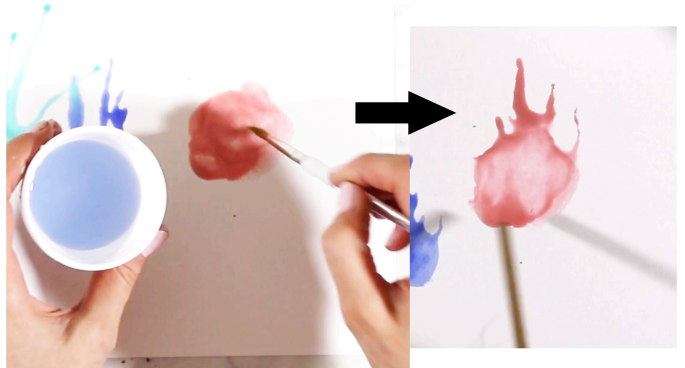
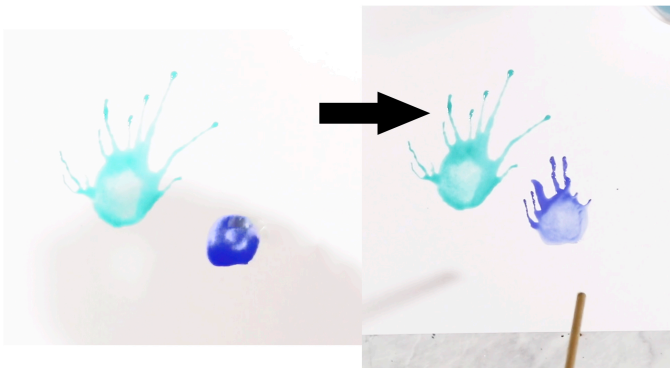
Set up your paper so the longest side is horizontal in front of you. You (the adult helper) should get a small amount of water in the cup and make sure the water won't hurt anything if spilled.

1. Use a wet paintbrush to make a quarter-size dot.
2. Dip the brush in water & add more water to the dot.



3. Use the straw provided to spread the dot. Hold the straw right above the paper (but not touching) and gently blow until the paint runs.

If you are following along with the video, for steps 4-6 you will make more dots of paint with different colors, add more water and then use the straw to blow them into fun shapes!



# GERM PAINTING

## PRESCHOOL ARTIST BOX



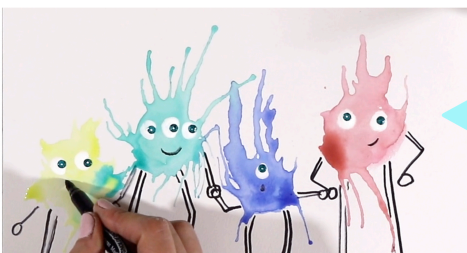
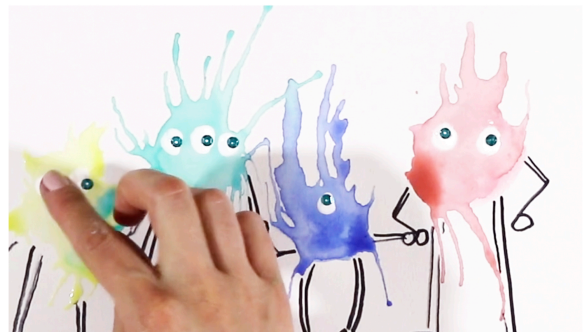
7. Turn the paper upside down and use the straw to blow the paint in the opposite direction.

8. Draw arms, legs, hands, and feet. Use straight, curved, or zigzag lines for arms and legs. Double the lines. Use ovals for hands and feet.



9. Use your paintbrush to paint circles on the “germs” as eyes.

10. Before the paint dries, put the sequins on the white circles.



11. Draw mouths on the germs with the permanent marker.

12. Paint the legs, arms, and feet to make them stand out more!

