



Project 4

Elementary ARTIST BOX



1. Draw the body of the butterfly right in the middle of the page! Its head will be a bit bigger and rounder than the rest of the body.

2. Outline the wings with orange. Keep in mind there are really two sections to each wing. Also, you are looking at the wings from a side-view so they may not be symmetrical (completely the same on each half of the butterfly)

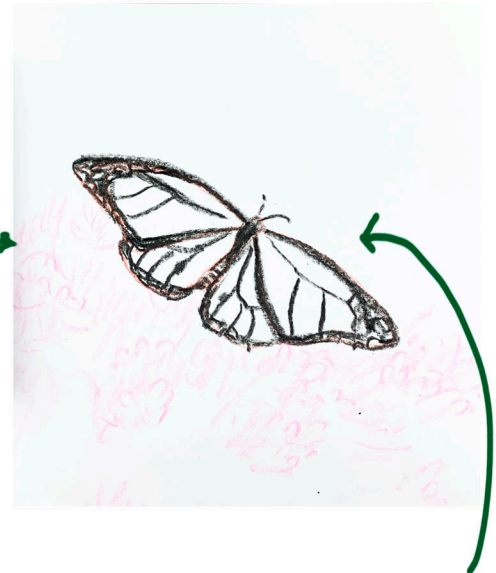
It's best to draw exactly what you see in the reference photo so it looks as real as possible!

3. Draw the petals of the flower. Try using pink to make some marks that look like the petals of this flower.

4. Darken the edges of the wings and body. Use your black crayon to outline and thicken the edges of the butterfly wings. Also, color the body.

🌱 Look carefully at the butterfly to see the white spots and lighter areas. Try to color around those if you want to see them when you are finished!

🌱 5. Add the black lines on the wings (where the orange part will be). Now that you have the wings outlined in black around the edges, it's time to add the black lines in the orange areas of the wings too!



6. Draw the grass in the background. Use dark green to outline the blades of grass in the background. You don't need to draw each one, just add a few of the main blades of grass you see.

7. Draw the flower stems. Use pink again to draw the stems under the flowers.



Our younger friends will make very simple flower stems. Have them draw only one line instead of outlining the stems.



Project 4

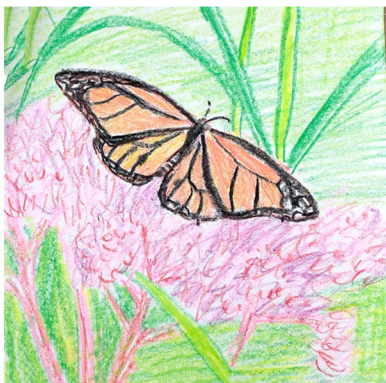
Elementary ARTIST BOX

8. Color in the butterfly! Start with orange and color the inside of the butterfly.

🌱 Then, if you're feeling more advanced, add hints of yellow and even red where you see it needs some variation.

🌱 An even more advanced step is to use your white crayon to color over the orange, yellow, and red and blend them so the color looks more smooth!

9. Color the background. Use a combination of dark green, light green, and yellow to make the background and color the grass.



10. Add more color to the flower. Use colors like pink, red, and purple to color the flower more!

If you are in the more advanced groups, be careful where and how you add these colors!



11. Arrange and glue down the beads! As you can see in the video tutorial, we added glue first this time since all of the beads are the same and will be easy to stick down. Figure out where you want your beads and add the glue then stick them down!