



## Starry Night Palette Knife Painting



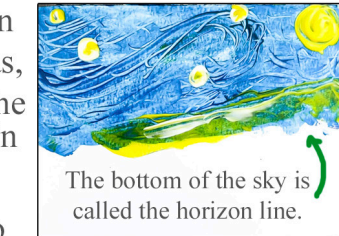
1. Start with blue and use your palette knife to smear the blue paint across the top half of your canvas (or paper).

Once the blue is on the paper or canvas, carve swirls into the sky so that it looks like the brush strokes in van Gogh's *Starry Night* painting.

2. Make dots of yellow paint in the sky to look like stars. Then, make a larger dot in the sky that looks like a large moon. When done, you can also smear some yellow across the horizon line (on the right side).



3. Make black cypress trees sticking up out of the left side of the horizon line. Then, smear the black paint all the way across the bottom half of the paper. It can look hilly.



The bottom of the sky is called the horizon line.

4. Scratch lines into the black land so that it looks like a little town down there in the shadows.

5. Throw in some dashes of blue and even yellow into the town to look extra fancy.



Classy Artist Box loves to see you and your family having fun!  
Ask your parents to share spring-y snaps on social media and tag us!

2 @ClassyArtistBox #ClassyArtistBoxKids



## Monet Water Lilies Palette Knife Painting

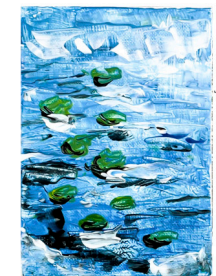


1. Set up your workstation and take out your last canvas to use for this water lilies project. Put a quarter-size drop of blue, white, black, & yellow on your palette.

2. Use your palette knife to smear blue on the whole canvas. You won't need a lot of the blue paint because it's OK to let some of the white canvas show through. Then, scrape the canvas with the tip of your palette knife to add a wavy texture into the blue paint.

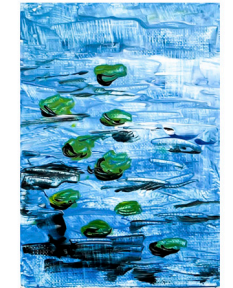


3. Mix yellow + blue paint into green, then smear it in the shape of lily pads (in small little oval dabs) onto the canvas. If you want, you can keep the lily pads over toward the left side of the canvas as you see in the example, but you get to pick where they



go.

4. Make small black shadows under each lily pad. Then, make black shadowy horizontal lines between the lily pads.



5. Finally, add white highlights with horizontal lines on the canvas, between the lily pads.

@ClassyArtistBox #ClassyArtistBoxKids



3